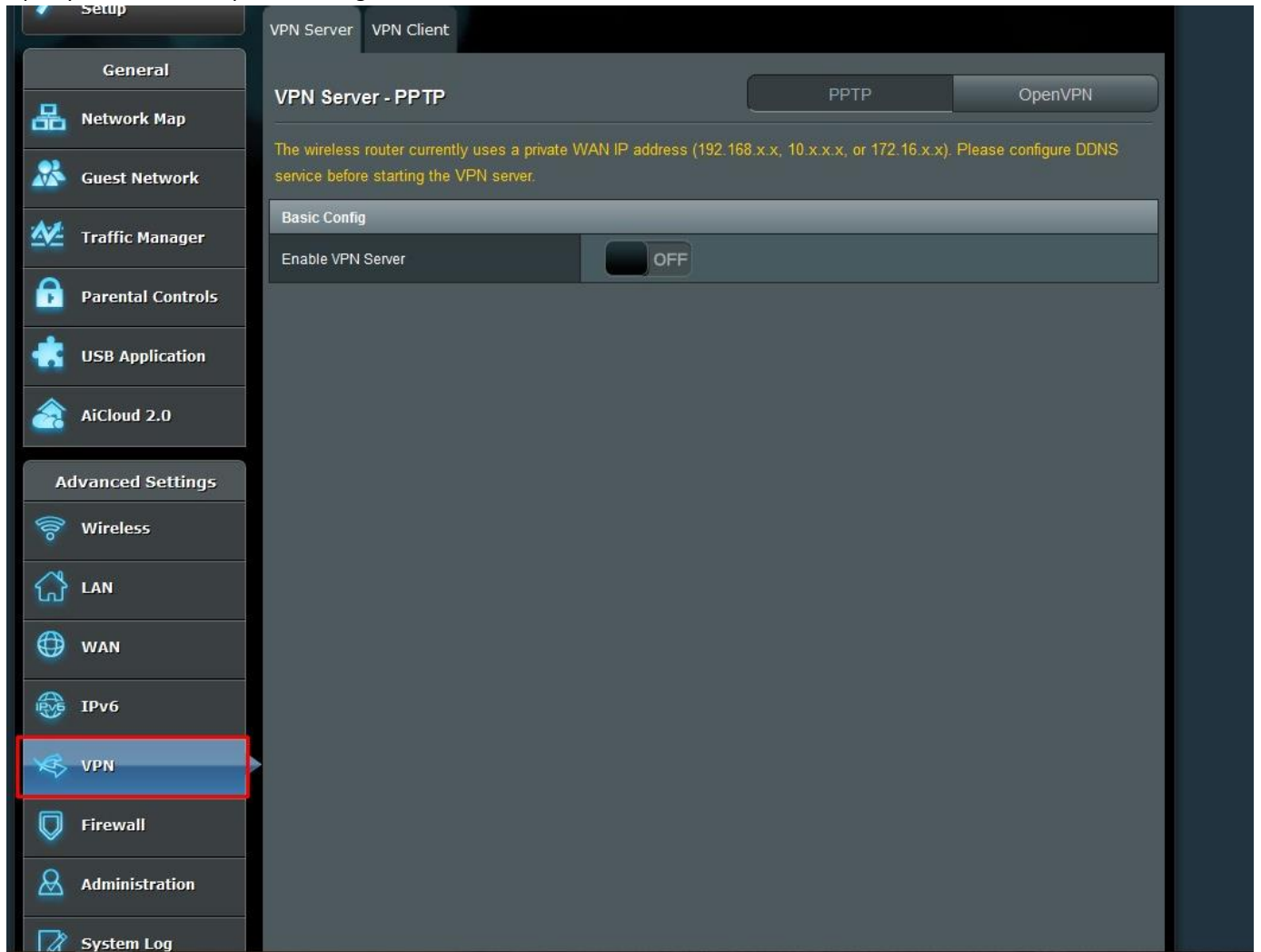


Goose OpenVPN guide for Asus RT-N66U router

1. Open your router set up menu and go to **VPN** menu on the left



2. Click on **VPN Client**

The screenshot displays the ASUSWRT web interface for configuring VPN clients. On the left, a navigation menu includes 'Setup', 'General', 'Network Map', 'Guest Network', 'Traffic Manager', 'Parental Controls', 'USB Application', 'AiCloud 2.0', 'Advanced Settings', 'Wireless', 'LAN', 'WAN', 'IPv6', 'VPN', 'Firewall', and 'Administration'. The 'VPN' menu item is highlighted. The main content area is titled 'VPN - VPN Client' and contains the following text:

VPN (Virtual Private Network) clients are often used to connect to a VPN server to access private resources securely over a public network.
Some devices like set-top boxes, smart TVs and Blu-ray players do not support VPN software.
The ASUSWRT VPN feature provides VPN access to all devices in a home network without having to install VPN software on each device.

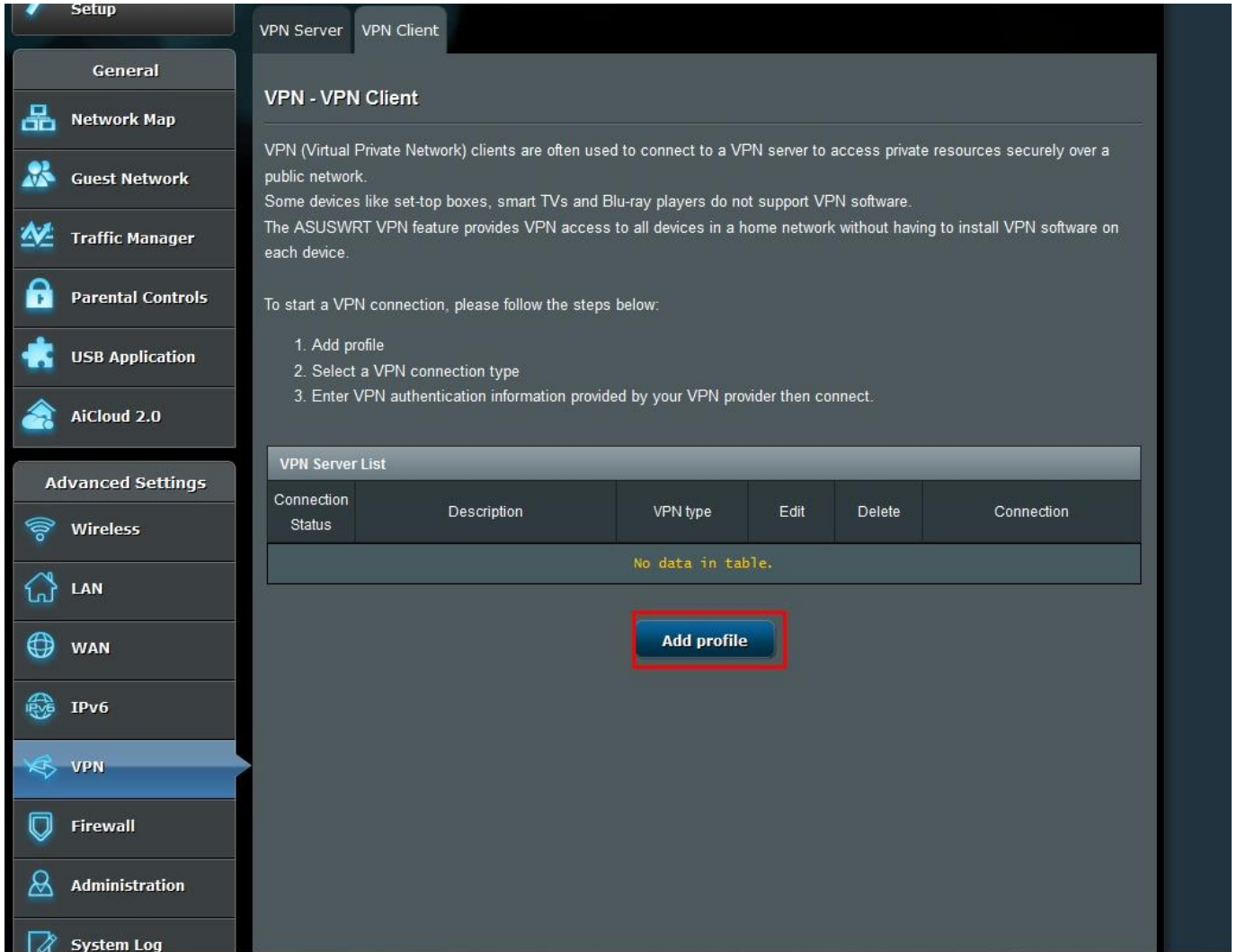
To start a VPN connection, please follow the steps below:

1. Add profile
2. Select a VPN connection type
3. Enter VPN authentication information provided by your VPN provider then connect.

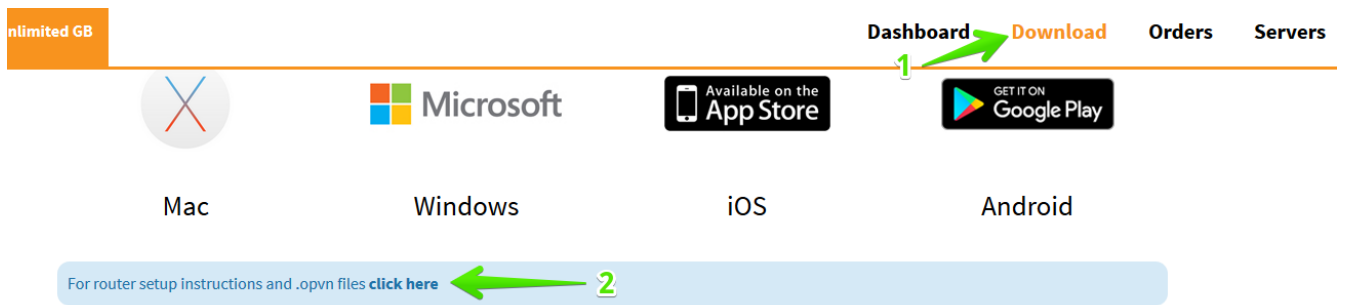
Below the instructions is a table titled 'VPN Server List' with the following columns: Connection Status, Description, VPN type, Edit, Delete, and Connection. The table is currently empty, with the text 'No data in table.' displayed in the center.

At the bottom of the page, there is a button labeled 'Add profile'.

3. Click on **Add Profile**



4. Make sure you select **OpenVPN**, then type the required details in the VPN window (**Description** = any name for your vpn connection, **User Name**= your registration email, **Password**=get in client area – see screenshot).

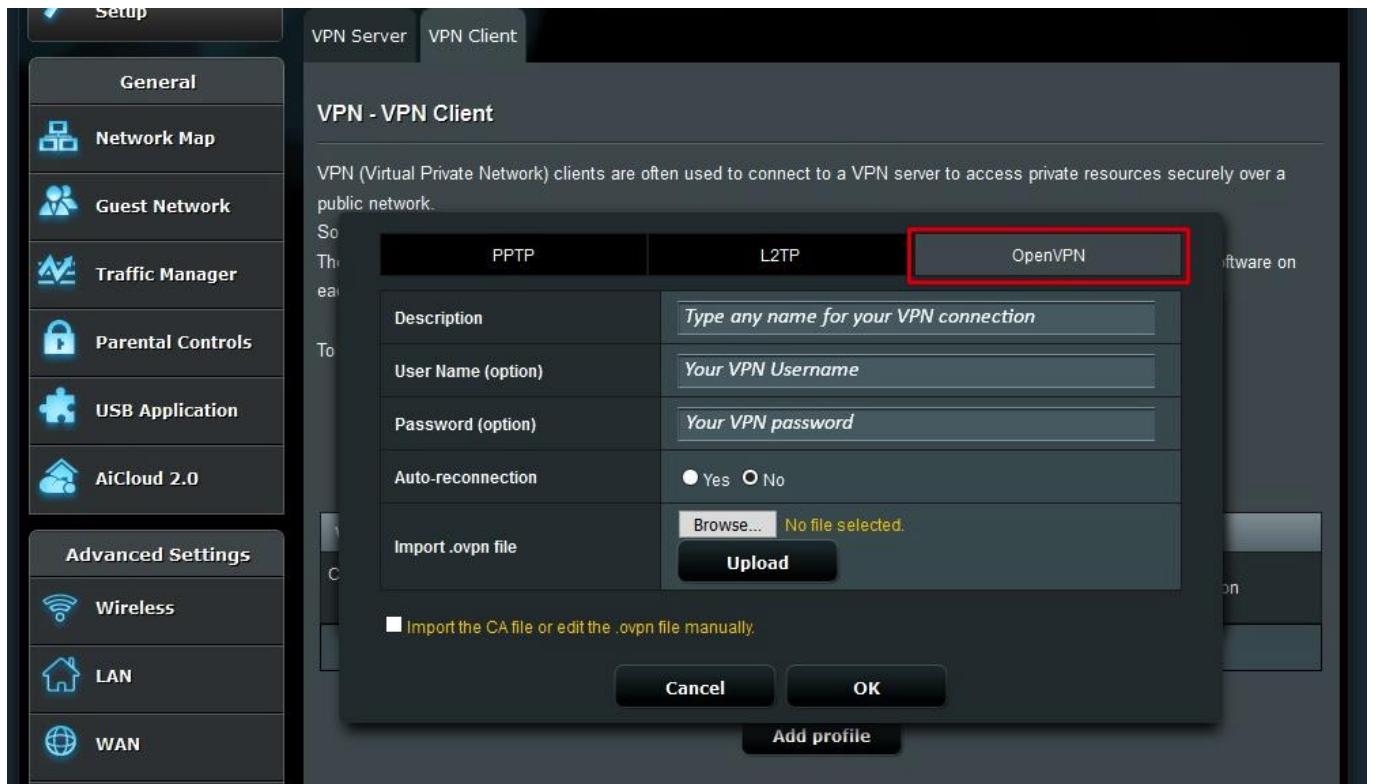


Router instructions and .ovpn files

Get password (token) for manual connection

Your user password

Error: failure verify login/password with due to -Email or Password Invalid"



5. Click on **Browse** to add the openvpn config and **choose** the desired server location config. Next, click on **Open**
6. Click on **Activate** and wait about 2 min.

